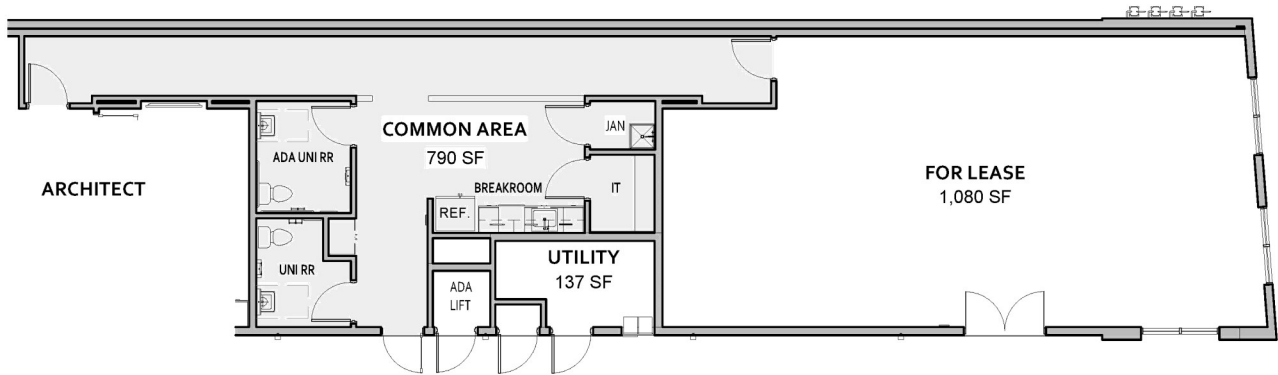


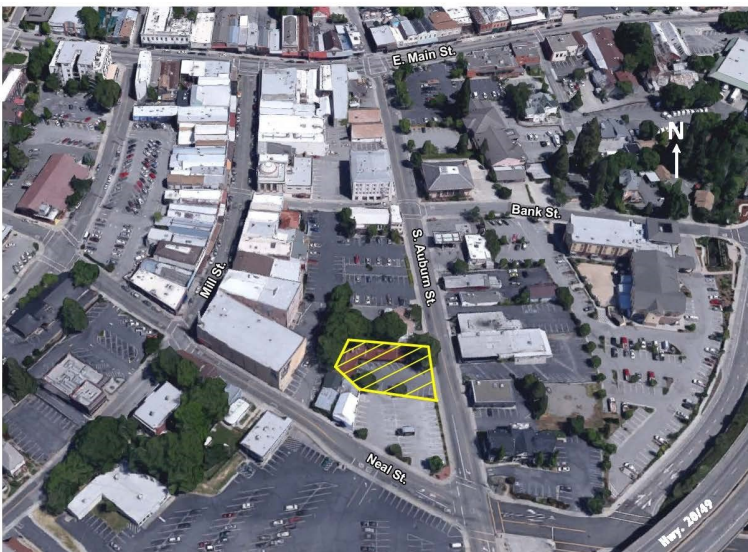


FOR LEASE

152 S. Auburn St., Grass Valley



AVAILABLE SPRING 2022



- 1,475 Square Feet
- Prime Office or Retail
- On-Site Parking
- Excellent location near freeway
- Easy walk to banks, shops, restaurants, theaters and hotels.

PACIFIC LAND ENTERPRISES

530.273.9262

Bruce@PacificLandEnterprises.com

www.PacificLandEnterprises.com

